



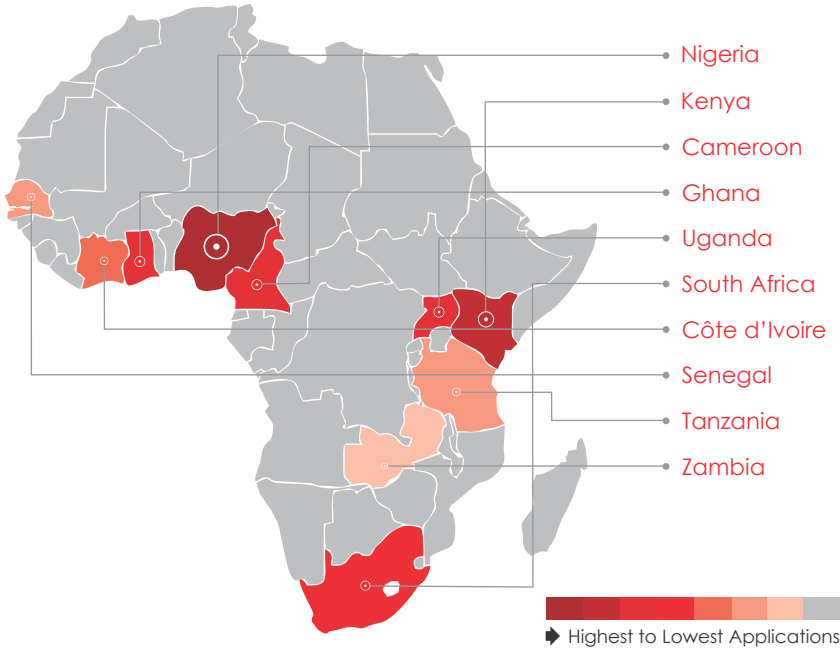
# TEF ENTREPRENEURSHIP PROGRAMME 2015 APPLICATIONS AT A GLANCE

## VOLUME OF APPLICATIONS

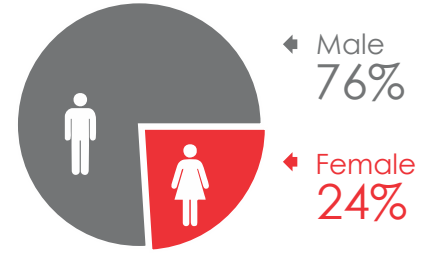


**20,000** applications were received from residents of **53 African countries** with Nigeria contributing 64%.

## THE TOP 10 COUNTRIES BY APPLICATIONS



## GENDER DISTRIBUTION



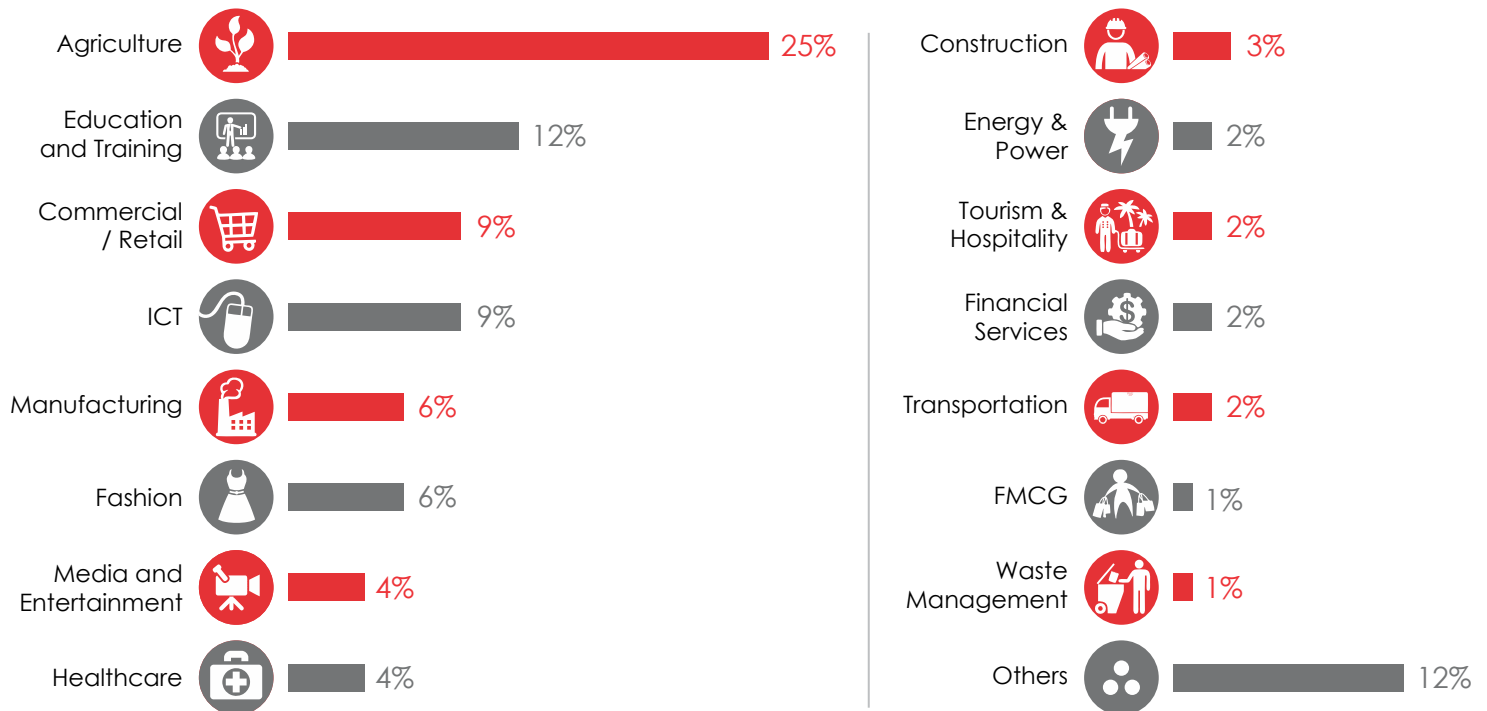
## STAGE OF BUSINESS

A relatively even spread in terms of stage of business for the applications received.



## SECTORS REPRESENTATION AMONG APPLICANTS

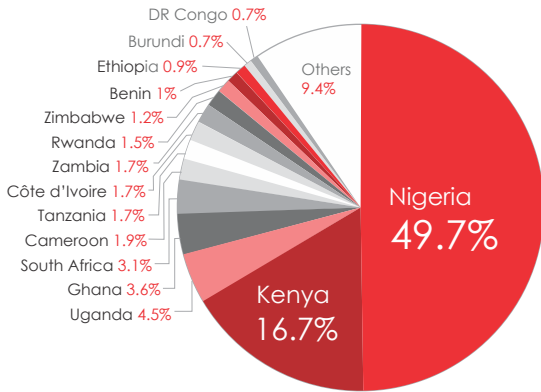
High level of diversity in terms the range of business ideas proposed by applicants in 2015. **Agriculture, Education, Commerce** and **ICT** were the leading sectors, contributing 55%.





## THE SELECTED 1,000

### DISTRIBUTION OF SELECTED 1,000 APPLICANTS BY COUNTRIES OF RESIDENCE



Country	Selected	%
Nigeria	497	49.7%
Kenya	167	16.7%
Uganda	45	4.5%
Ghana	36	3.6%
South Africa	31	3.1%
Cameroon	19	1.9%
Tanzania	17	1.7%
Côte d'Ivoire	17	1.7%
Zambia	17	1.7%
Rwanda	15	1.5%
Zimbabwe	12	1.2%
Benin	10	1%
Ethiopia	9	0.9%
Burundi	7	0.7%
DR Congo	7	0.7%
Others	94	9.4%

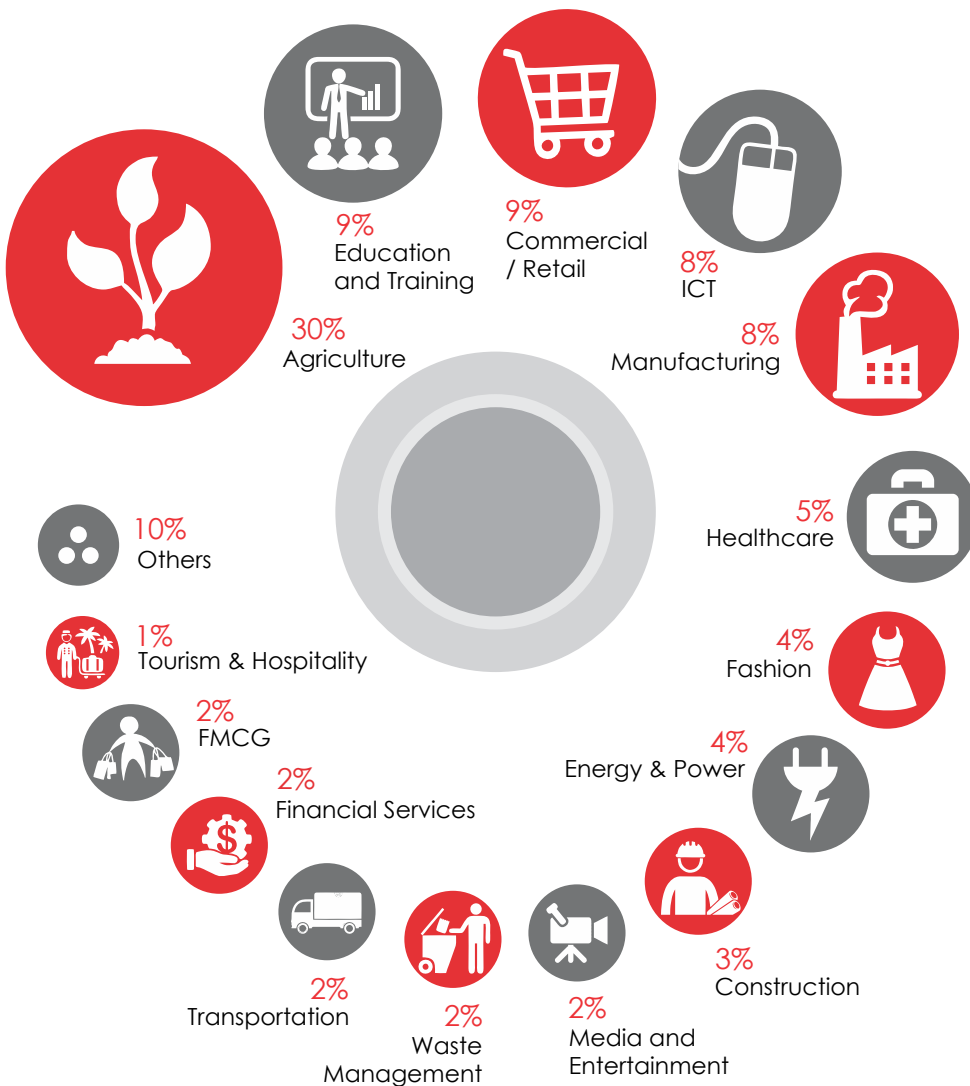
### GENDER DISTRIBUTION



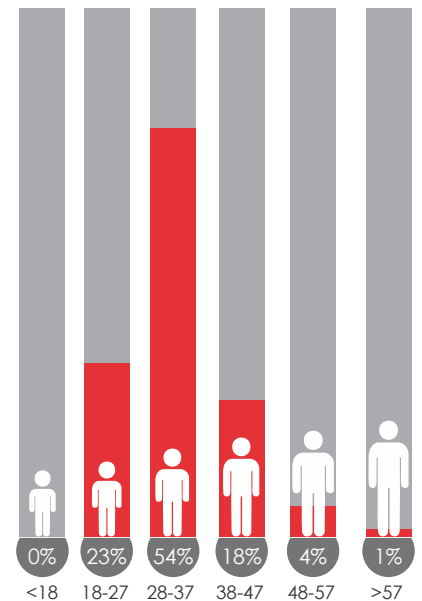
Country	Female	Male
Nigeria	176	321
Kenya	31	81
Uganda	9	36
Ghana	7	29
South Africa	7	22
Cameroon	4	15
Tanzania	4	13
Côte d'Ivoire	1	16
Zambia	5	12
Rwanda	4	11

Gender distribution across the Top 10 TEEP 1,000 countries ■ Female ■ Male

### SECTOR DISTRIBUTION AMONG THE FINAL 1,000 SELECTED APPLICANTS



### TEEP 1000 – AGE OF APPLICANTS



### STAGE OF BUSINESS AMONG SELECTED 1000 ENTREPRENEURS

