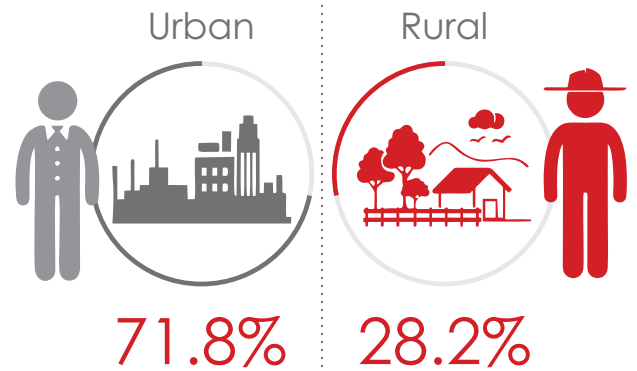




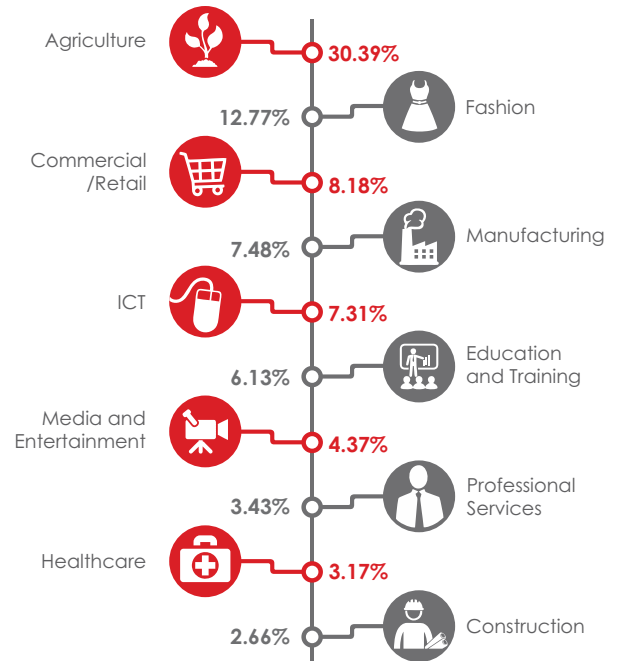
## TEF ENTREPRENEURSHIP PROGRAMME 2018 APPLICATIONS AT A GLANCE

### DEMOGRAPHY OF APPLICATIONS

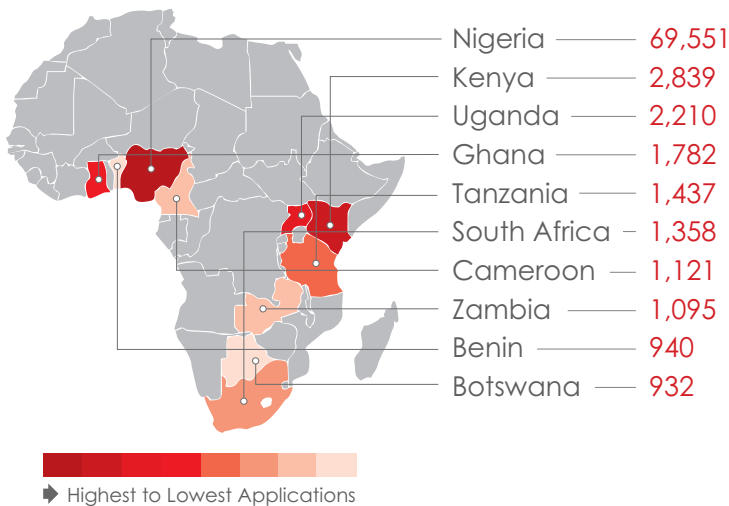


### TOP 10 SECTORS BY APPLICATION

Agriculture (30.39%), Fashion (12.77%) and Commercial/Retail (8.18%) lead as top 3 sectors

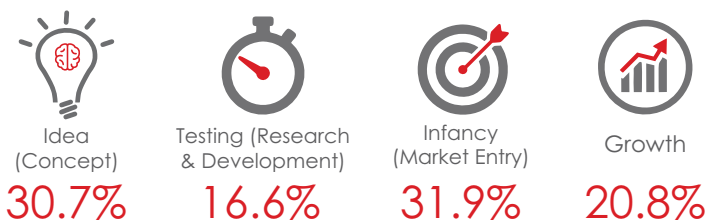


### TOP 10 COUNTRIES BY APPLICATION

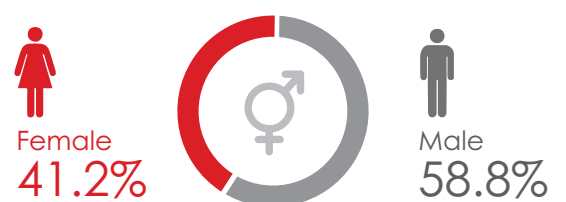


### APPLICATIONS BY STAGE OF BUSINESS

Majority of the applications received (79.2%) were from new businesses in the idea to infancy stages



### GENDER DISTRIBUTION AMONG APPLICANTS



There was a 2% increase in female applications compared to 2017's figures of 39.17%.



## THE 2018 SELECTION

### SELECTED BATCH OF 1,000 BY REGION

Fifty-one (51) African countries were represented in the batch of selected 1,000, with Nigeria comprising 26%.

423



Western Africa	423
Nigeria	263
Ghana	40
Benin	32
Cote D'Ivoire	12
Senegal	11
Liberia	8
Togo	7
Niger	7
Mali	7
Sierra-Leone	6
Cape Verde	5
Mauritania	5
Guinea	5
Gambia	5
Guinea-Bissau	5
Burkina Faso	5

392



Eastern Africa	392
Uganda	125
Kenya	74
Tanzania	48
Rwanda	47
Zambia	22
Zimbabwe	21
Ethiopia	10
Malawi	8
Mozambique	5
Madagascar	5
Djibouti	5
Mauritius	5
Comoros	5
Burundi	5
Seychelles	4
Eritrea	3

86



Central Africa	86
Cameroon	38
Congo, DR	9
Congo	7
Central African Rep.	7
Angola	5
Sao Tome & Principe	5
Gabon	5
Chad	5
Equatorial Guinea	5

74



Southern Africa	74
Botswana	29
South Africa	28
Swaziland	7
Lesotho	5
Namibia	5

25

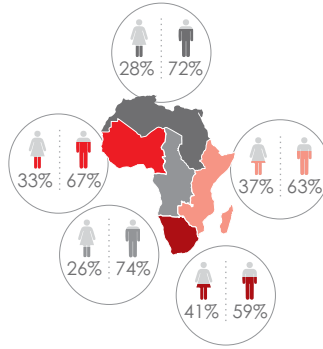
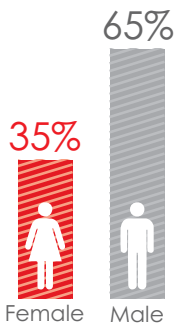


Northern Africa	25
Algeria	5
Egypt	5
Libya	5
Morocco	5
Tunisia	5

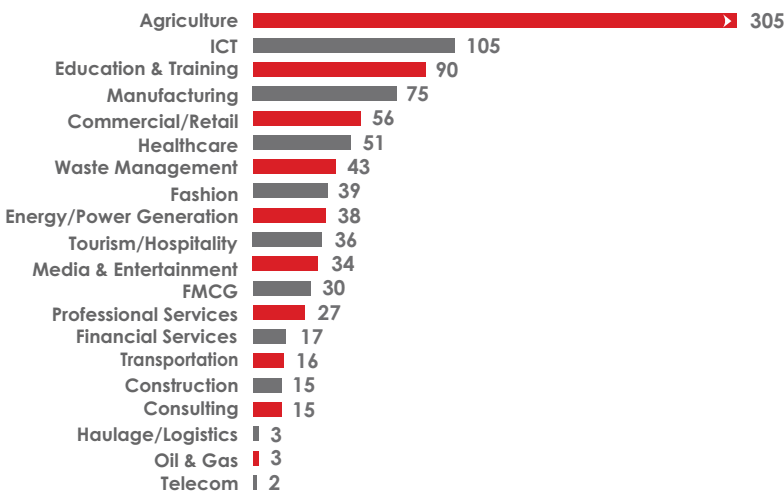
### GENDER DISTRIBUTION

A total of **353** applicants from the selected batch of 1,000 are female entrepreneurs, representing 35% of selected applicants.

Madagascar (100%), Seychelles (75%), DRC (67%), Lesotho (60%) and Morocco (60%) had more female applicants selected.

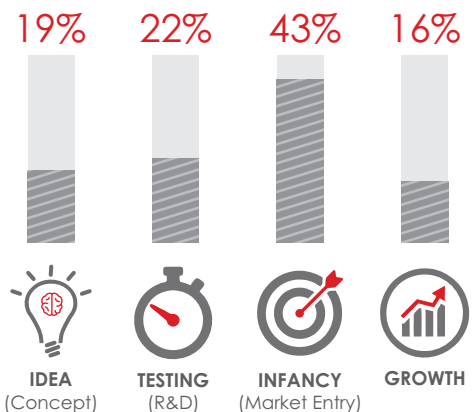


### SECTOR DISTRIBUTION



### DISTRIBUTION BY STAGE OF BUSINESS

Majority of the selected applications (59%) are from late-stage businesses in the Market Entry and Growth stages.



200

\$1,000,000 fund support from ICRC (For conflict and fragile zones of Nigeria – North East and the Niger Delta)



40

\$200,000 Fund support from UNDP (For pan-African entrepreneurs)



10

\$50,000 Fund support from INDORAMA (For 10 Nigerian entrepreneurs)